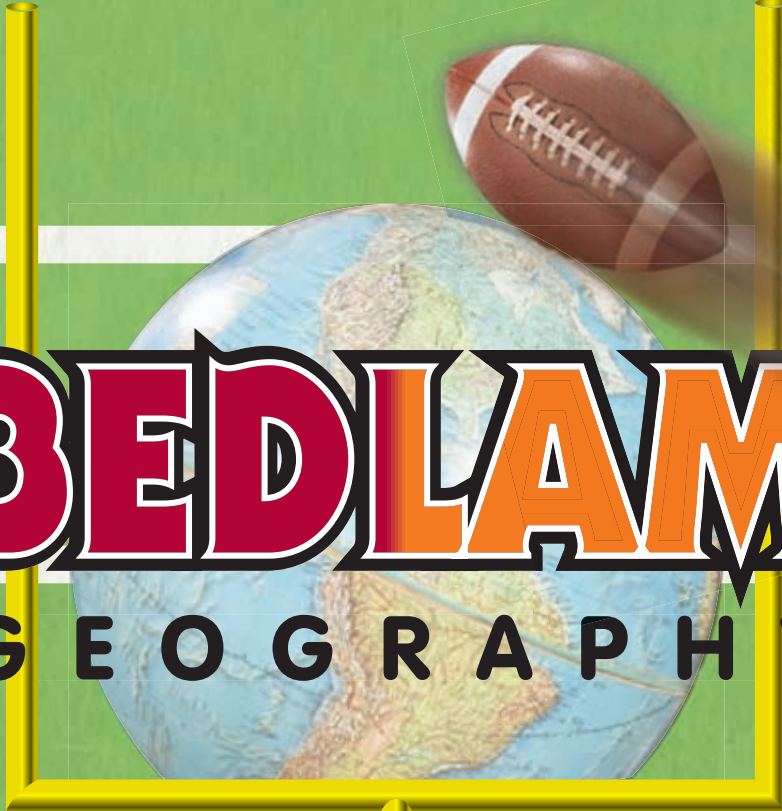




BEDLAM

GEOGRAPHY



This educational program brought to you by:



TABLE OF CONTENTS

Contributing Lesson Authors:

Bill Amburn is an OKAGE Teacher Consultant from Bartlesville, where he teaches 7th grade World Geography at Central Middle School. Bill is also the Oklahoma State Geographic Bee Coordinator.

Patricia Anduss is an OKAGE Teacher Consultant from Tulsa. Patricia teaches 11th and 12th grade Sociology and U.S. History at Bartlesville High School.

Teresa Begley is an OKAGE Teacher Consultant from Pauls Valley. Teresa is a social studies specialist at the K-20 Center at the University of Oklahoma in Norman.

Lyndal Caddell is an OKAGE Teacher Consultant from Noble, where he teaches 7th grade World Geography and 8th grade U.S. History at Curtis Inge Middle School.

Denise Rhodes is an OKAGE Teacher Consultant from Miami. Denise teaches 9–12 Oklahoma History, U.S. History, World Geography, World History, Native American History and Government at Quapaw High School in Quapaw.

Glenda Sullivan is an OKAGE Teacher Consultant from Lawton, where she retired from Lawton Public Schools. Glenda frequently presents workshops and leads institutes for OKAGE.

Ann Kennedy is an OKAGE Teacher Consultant from Oklahoma City, where she teaches 11th and 12th grade AP U.S. History and AP Government at Southeast High School. Ann is the Oklahoma U.S. History Teacher of the Year.

Editors:

Dr. Gary M. Gress, Coordinator, Oklahoma Alliance for Geographic Education

R. Eugene Earsom, Program Director, Oklahoma Alliance for Geographic Education

Brooke Barnett, Communications and Development Director, Oklahoma Alliance for Geographic Education

About OKAGE:

The Oklahoma Alliance for Geographic Education (OKAGE) is a professional organization for geography and social studies educators in Oklahoma. OKAGE is affiliated with the National Geographic Society and its national network of state geographic alliances, the Oklahoma State Department of Education and other national geography organizations.

OKAGE provides a year round schedule of professional development institutes for in-service and pre-service teachers of all grade levels and subjects, including summer workshops and field studies that provide experiential learning opportunities. OKAGE maintains a communication network among geography educators, as well as online resources and information of value to geography educators.

For more information about OKAGE, please visit www.okageweb.org, email okage@ou.edu, or call 405.325.5832.

WEEK 1 GAMES

Written by **Glenda Sullivan,**
OKAGE Teacher Consultant, Lawton

GAME SCHEDULE

Florida Atlantic at Texas

Oklahoma State at Washington State

Western Michigan at Nebraska

Chattanooga at Oklahoma

Arkansas State at Texas A&M

Florida International at Kansas

Eastern Washington at Texas Tech

North Texas at Kansas State

Illinois at Missouri

Chattanooga at Oklahoma

1. Will Rogers, a famous Oklahoma native son, was born in Oologah, Indian Territory, now Oklahoma. He was an American humorist who became famous through motion pictures, books, the radio and a syndicated newspaper column. Rogers was killed with Wiley Post when their plane crashed near Point Barrow, Alaska. Where is the Will Rogers Memorial located and how many miles is it from Norman? Need help? Use an Oklahoma road map to find the answer!

Oklahoma State vs. Washington State

2. What mountain range runs north to south and divides the state of Washington into two distinct regions and climates? The west is lush, green and temperate while the east consists of deserts and pine forests.

3. Puget Sound is an arm of the Pacific Ocean, connected to the rest of the Pacific by what strait?

Illinois vs. Missouri

4. A thunderous clamor of hooves and a loud roar from a crowd of people occurred on April 3, 1860, in St. Joseph,

Missouri. This was the beginning of what historic event in American history?

Arkansas State at Texas A&M

5. What is the name of the national park in Texas that forms a triangle where the Rio Grande River meanders through deep canyons along the United States — Mexico border?

OVERTIME ACTIVITY

Oklahoma's many state parks are located throughout the state. Locate and name the parks on a blank map of Oklahoma. To do this activity, use the online Oklahoma Atlas at <http://www.okatlas.org/okatlas/tourism/stateparks.htm>.



WEEK 2 GAMES

Written by **Bill Amburn,**
OKAGE Teacher Consultant, Bartlesville

GAME SCHEDULE

San Jose State at Nebraska
 Southeast Missouri State at Missouri
Houston at Oklahoma State
 Eastern Washington at Colorado

Cincinnati at Oklahoma
 Texas A&M at New Mexico
 Kent State at Iowa State
 Northwestern State at Baylor

Louisiana Tech at Kansas
 Montana State at Kansas State
 Texas Tech at Nevada
 Texas at UTEP

Oklahoma State University vs. Houston AND University of Oklahoma vs. Cincinnati

- 1.** Houston is a port city because of its location on what body of water?
- 2.** The University of Houston football team will travel in what general direction to play the Oklahoma State Cowboys?
- 3.** What city do the astronauts mention frequently in their radio messages from space? Why?
- 4.** Cincinnati is not on a gulf or ocean but considers itself a port city because it ships products and goods on barges on what body of water?
- 5.** The University of Cincinnati will travel to the University of Oklahoma in what intermediate direction?



OVERTIME ACTIVITY

Read about recipes in the community section of *The Oklahoman*. Write your own recipe article about Cincinnati Chili. Go to <http://whatscookingamerica.net/Beef/CincinnatiChili.htm> for the recipe and history of Cincinnati chili. This unique chili is made with what Middle Eastern spices?

WEEK 3 GAMES

Written by Teresa Begley,
OKAGE Teacher Consultant, Pauls Valley

GAME SCHEDULE

Iowa State at Iowa
Washington State at Baylor
Nevada at Missouri

New Mexico State at Nebraska
Missouri State at Oklahoma State
Southern Methodist at Texas Tech

Arkansas at Texas
Oklahoma at Washington

Oklahoma at Washington

1. The Columbia River is an important source of power for the states in the Northwest especially for the state of Washington. Name the location of the river's source and the mouth.

2. The Oklahoma Sooners play the University of Washington in Seattle, located on the Puget Sound. What is a sound? Name another famous sound located in New York.

3. Rain forests result from great amounts of rainfall. There are two types of rain forests. What are they? Explain the difference between the two types. What type of rain forest is found on the Olympic Peninsula in the state of Washington?

Missouri at Oklahoma State

4. What famous monument is located in St. Louis, Missouri, and what is its significance?

5. Where are the highest points in Oklahoma and Missouri located? What is the elevation of each place?



OVERTIME ACTIVITY

The Native Americans of the Pacific Northwest used totem poles. Visit www.totempoles.info to learn more about the cultural significance of totem poles. What were they used to communicate? What are the meanings of the eagle, raven and wolf? In what two states are totem poles still being made?

WEEK 4 GAMES

Written by Denise Rhodes,
OKAGE Teacher Consultant, Miami

GAME SCHEDULE

Kansas State at Louisville
West Virginia at Colorado
Baylor at Connecticut

Buffalo at Missouri
Rice at Texas
Miami (FL) at Texas A&M

Sam Houston State at Kansas
Massachusetts at Texas Tech
Iowa State at UNLV

- 1.** What are the lowest points in Kansas, Colorado, Texas, Iowa and Missouri? Hint: Many of these are historically famous bodies of water.
- 2.** How do the Big XII states of Kansas, Colorado, Texas, Iowa and Missouri rank in size and square miles (largest to smallest)?
- 3.** Where are the capital cities of this week's five featured Big XII states and which city had a famous railroad named after it?
- 4.** Which of the five states is covered by the most water? Which has the least surface water?
- 5.** Both West Virginia and Colorado have a common heritage regarding what industry?

OVERTIME ACTIVITY

Research the mining industry in both Colorado and West Virginia. What minerals are typically mined in both states? Which state has the most diverse mineral wealth and why?



WEEK 5 GAMES

Written by Lyndal Caddell,
OKAGE Teacher Consultant, Noble

GAME SCHEDULE

Colorado at Florida State
Virginia Tech at Nebraska

Troy at Oklahoma State
TCU at Oklahoma

Louisiana-Lafayette at Kansas State
Army at Texas A&M

Troy at Oklahoma State

1. In the 1700s and 1800s, most colleges admitted men only or women only. Which team playing this week was the first co-educational institution of higher learning in Texas?

2. Two traditional football powers, Virginia Tech and Nebraska, play this week. These are located in Blacksburg, Virginia, and Lincoln, Nebraska. Which team would normally experience a wider range of temperatures and why?

3. Troy, Alabama, is the home of the Troy State Trojans, OSU's opponent this week. Troy shares its name with cities in sixteen other states as well as Jamaica and Canada. The original Troy, famous for the Trojan War and Trojan Horse, was located in what present-day country?

4. Which of this week's teams has a name reflecting its area's ethnic history? These refugees from Canada's maritime provinces settled there during the French and Indian War?

TCU at Oklahoma

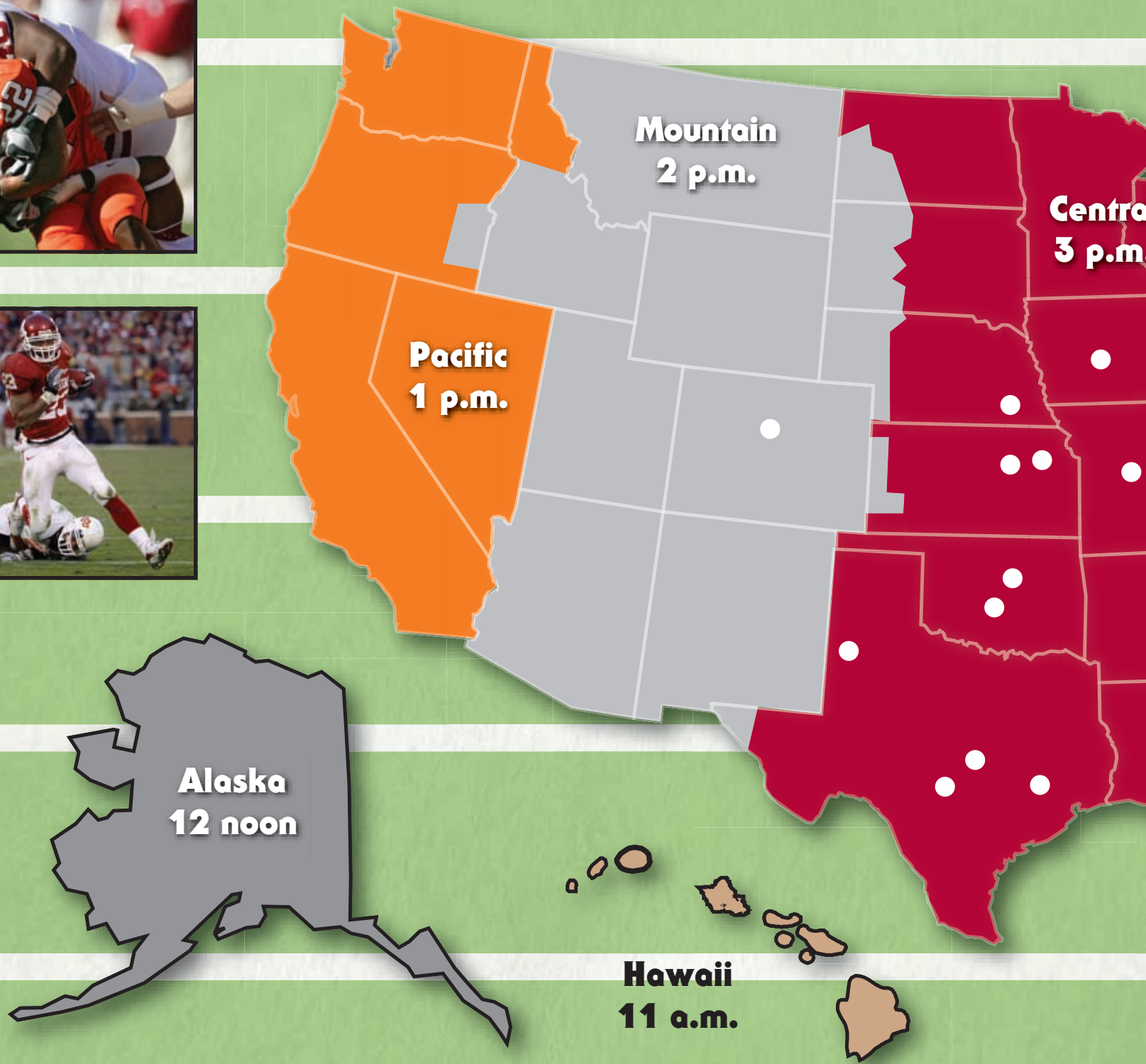
5. Football fans from Ft. Worth going to the TCU-Oklahoma game will probably drive I-35 to

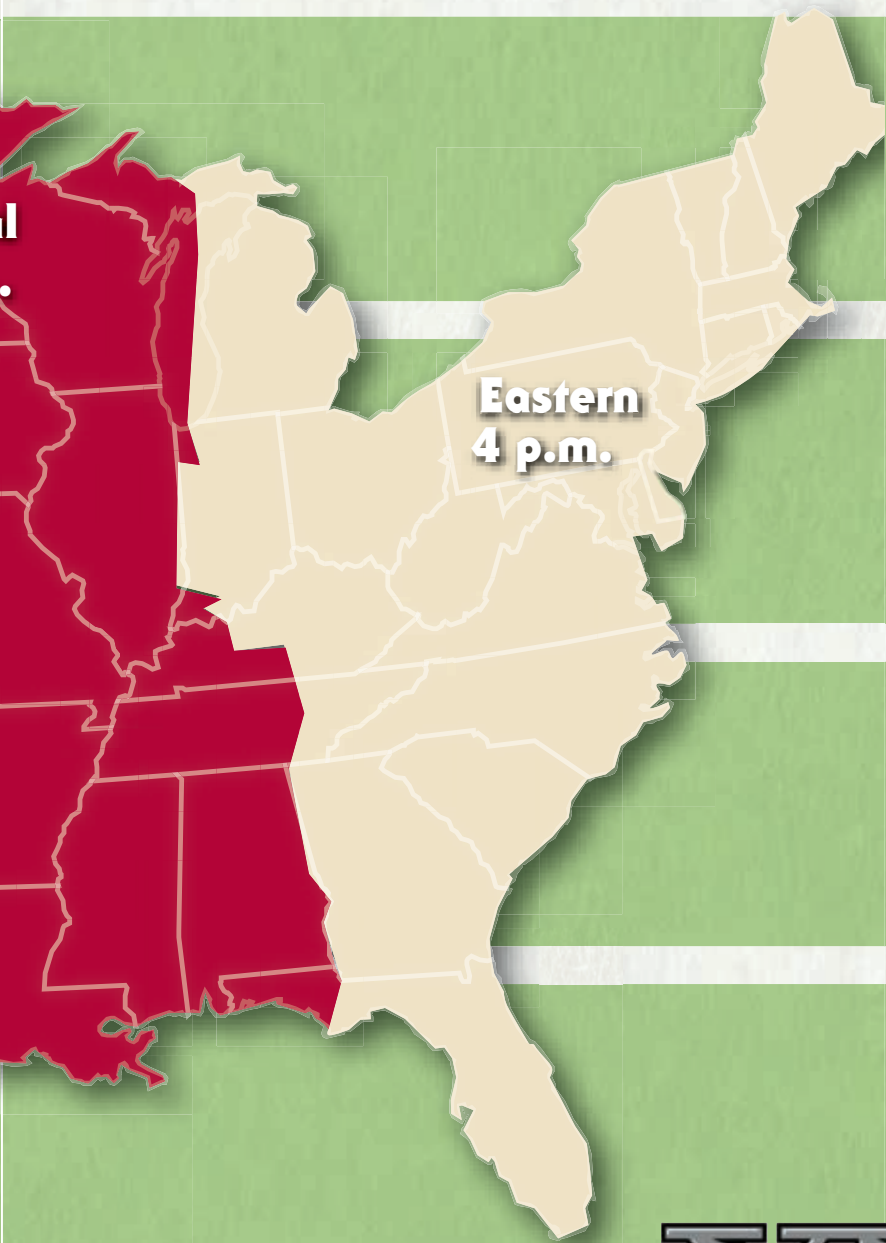
attend. What famous cattle trail did many cowboys from Ft. Worth use when they headed north to Indian Territory in the 1870s?

OVERTIME ACTIVITY

Texas Christian University is a member of the youngest Division I conference, the Mountain West Conference, formed in 1999. Identify and map the locations of the other eight conference teams. When did the United States acquire this region?







Eastern
4 p.m.

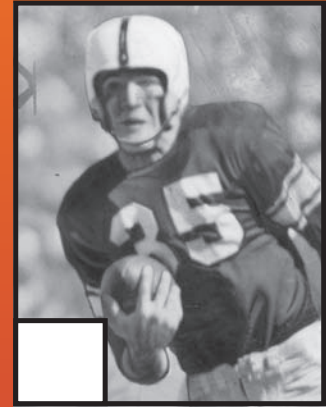
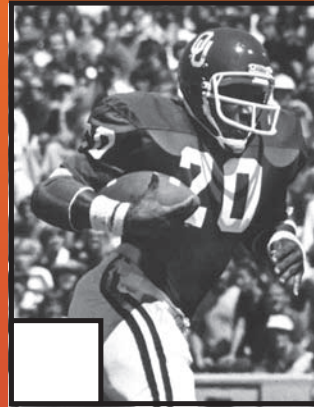


Draw a line from each Big 12 conference logo to the team's home city.



BEDLAM HEISMAN WINNERS

Write the letter of each Heisman winner in the box beside his matching photo.



- A. Billy Vessels
- B. Steve Owens
- C. Billy Sims
- D. Barry Sanders
- E. Jason White



WEEK 6 GAMES

Written by Patricia Anduss,
OKAGE Teacher Consultant, Tulsa

GAME SCHEDULE

Kansas at Iowa State
Missouri at Nebraska

Texas A&M at Oklahoma State
Oklahoma at Baylor

Texas Tech at Kansas State
Texas at Colorado

Texas A&M at Oklahoma State

1. Time zones change about every 15 degrees. A pass thrown by an OSU quarterback at 2:00 p.m., in Stillwater would be viewed at what time by a fan watching in New York? Name the time zones in the contiguous United States.

2. Texas Big XII teams are traveling to Oklahoma, Kansas and Colorado this week. If traveling to the game by car, which fans have the farthest to go?

- A. University of Texas fans traveling to Boulder, CO
- B. Texas A&M fans traveling to Stillwater, OK
- C. Texas Tech fans traveling to Manhattan, KS

Oklahoma at Baylor

3. Traveling by car from Norman to Baylor University in Waco, Texas, the Sooners and their fans will most likely use I-35. Do U.S. Interstates ending in odd numbers usually extend east / west or north / south?

4. The historic Chisholm Trail, open from about 1867 to 1885, passed through Waco, Texas. How long was this trail, most famous for getting cattle from Texas to Kansas railheads? How far south did the Trail go? How far north did it reach? Once they reached Kansas, what became of the cattle?

5. Norman and Stillwater both have a longitude of 97 degrees West. Find two international cities with similar longitude.



OVERTIME ACTIVITY

In the 19th century, railroad companies established the time zones in the United States in order to help people board trains on time. Find three articles in today's *Oklahoman* that mention railroads. Why is railroad traffic increasing?

WEEK 7 GAMES

Written by **Bill Amburn,**
OKAGE Teacher Consultant, Bartlesville

GAME SCHEDULE

Texas at Oklahoma
Oklahoma State at Missouri

Iowa State at Baylor
Kansas State at Texas A&M

Colorado at Kansas
Nebraska at Texas Tech

The University of Oklahoma vs. the University of Texas AND Oklahoma State University vs. the University of Missouri

1. Name the states that border Texas and the states that border Missouri.
2. Rivers form borders between states and between countries. Which rivers are borders of Texas and which rivers are borders of Missouri?
3. Missouri, Arkansas and Oklahoma share state boundaries and what landform?
4. Water for drinking, livestock and irrigation comes from which aquifer shared by Texas, Oklahoma, New Mexico, Colorado, Kansas and other states?
5. In what part of which state do you find the "Bootheel"?



OVERTIME ACTIVITY

Read the newspaper and find information about Missouri, Oklahoma or Texas geography. These things can be people, places or products. Describe three things that all three states have in common and something that makes each state unique.

WEEK 8 GAMES

Ann Kennedy,
OKAGE Teacher Consultant, Oklahoma City

GAME SCHEDULE

Nebraska at Iowa State
Baylor at Oklahoma State

Kansas at Oklahoma
Texas Tech at Texas A&M

Missouri at Texas
Kansas State at Colorado

Baylor at Oklahoma State

1. The home of the Baylor Bears is Waco, Texas, located near the Brazos River. Name the river that the Bears will cross upon entering Oklahoma. What other major rivers will the Baylor fans cross on their way to Stillwater if they travel by car?

2. Oklahoma State University was established in 1890 under the Morrill Act, which provided for land-grant colleges. What was the original name of OSU?

3. Stillwater is located in Payne County. Agriculture is an important part of the economy. What are the major crops grown in the county today?

Kansas at Oklahoma

4. The University of Kansas was founded by New Englanders who emigrated to Kansas Territory to create a state free of slavery. KU was the first university located in the Great Plains, which expand across the central part of the United States, mostly west of the 100th Meridian. Which

states surrounding Oklahoma are generally associated with the Great Plains?

5. This week the Jayhawks will take on the Sooners in Norman. Norman was developed primarily around a railroad that carried both passengers and freight. What was the name of the railroad?



OVERTIME ACTIVITY

Learn more about each of the states playing in the Big XII this week (Texas, Oklahoma, Kansas, Missouri, Nebraska and Iowa) by playing interactive geography games at http://www.sheppardsoftware.com/web_games.htm.

WEEK 9 GAMES

Written by Teresa Begley,
OKAGE Teacher Consultant, Pauls Valley

GAME SCHEDULE

Texas A&M at Iowa State
Colorado at Missouri

Baylor at Nebraska
Oklahoma State at Texas

Texas Tech at Kansas
Oklahoma at Kansas State

Oklahoma State at Texas

1. Name the natural geographic features that form boundary lines between Texas and several border states and another country.
2. What is the total area of Texas in square miles? It is the second largest state after what larger state geographically?
3. The current Oklahoma state flag was adopted in April 1925. Explain what the following symbols on the flag mean: sky blue field; stars in the shield; gray pipe or calumet; the green olive branch.

Oklahoma at Kansas State

4. Many Big XII colleges are located in the Great Plains. What are plains, and are they different from prairies?
5. Even though Oklahoma is an inland state, it contains a large number of shoreline miles. What is the approximate number of shoreline miles in Oklahoma? What accounts for this fact?



OVERTIME ACTIVITY

Water is an important resource in the Southwest and in the Great Plains, the locations of many of our Big XII Teams. Do an Internet search on the term "aquifer". Write a brief paragraph describing how aquifers work. Explain why they are an important source of water for Oklahoma and much of the Southwest.

WEEK 10 GAMES

Written by **Glenda Sullivan,**
OKAGE Teacher Consultant, Lawton

GAME SCHEDULE

Iowa State at Oklahoma State
Nebraska at Oklahoma

Missouri at Baylor
Colorado at Texas A&M

Kansas State at Kansas
Texas at Texas Tech

Nebraska at Oklahoma

1. Oklahoma and Nebraska each border six states. Name the three states that border **both** Oklahoma and Nebraska.

Iowa State at Oklahoma State

2. Iowa State hopes their team won't get blown away by Oklahoma State. Most of the state of Oklahoma lies in an area sometimes called "_____", characterized by frequent interaction between cold and warm air masses producing severe weather. An average of fifty-four tornadoes strike the state each year.

Kansas State at Kansas

3. North America's largest tract of tall grass prairie is located in east central Kansas. What is the name of this unique gently rolling landscape blanketed with tall grass?

4. The Jayhawks and the Wildcats are archrivals. Where is the University of Kansas located? Where is Kansas State University located? What is the distance between these two rivals? In what general direction will the Wildcats travel to play the Jayhawks?

Texas at Texas Tech

5. Shipping is a vital industry of the Texas Gulf Coast. Houston, the fourth largest city in the U.S., has a ship canal to the Gulf of Mexico and is the nation's second largest port in tonnage handled. Name at least four other Gulf ports in Texas.

OVERTIME ACTIVITY

It is important for Big XII teams to know the location of the states where they play football each season. To see if you can locate all fifty states on a map, go to My Wonderful World website at www.mywonderfulworld.org and play Geo Spy under "Test Your Global IQ." After you complete this exercise, see how many countries you can locate on other continents.



WEEK 11 GAMES

Written by Denise Rhodes,
OKAGE Teacher Consultant, Miami

GAME SCHEDULE

Kansas State at Missouri
Kansas at Nebraska

Oklahoma at Texas A&M
Baylor at Texas

Oklahoma State at Texas Tech
Iowa State at Colorado

1. Born in 1860, this colorful character was an author, stage coach driver, Indian scout, cattle herder and lawman. Since the 1950s, what Big XII University has featured his caricature as its mascot? What was his real name and how did he earn his more commonly known nickname?

2. One of this week's Big XII cities is home to a river named after a state. What's the city and what is the name of the river?

3. What is the University of Nebraska's team nickname? How does that relate to a strange field phenomenon attributed by some to be created by extra terrestrials?

4. El Paso in west Texas conducts major cross border trade with what Mexican city? Which city has a larger population?

5. Most commonly associated with Asia, what is the unusual dominant crop in East Texas?

OVERTIME ACTIVITY

Crop circles have been found in various places in Nebraska, but are truly a worldwide phenomenon. Research crop circles to see how many of these have been found around the world and in what countries.



WEEK 12 GAMES

Written by Patricia Anduss,
OKAGE Teacher Consultant, Tulsa

GAME SCHEDULE

Missouri at Iowa State
Texas A&M at Baylor

Texas at Kansas
Nebraska at Kansas State

Oklahoma State at Colorado

Oklahoma State at Colorado

1. While in Boulder, OSU Cowboys and their fans can hike in what nearby national park?
2. What is the elevation in Boulder? How might this affect visiting players?
3. This week Big XII games are being held in Colorado, Iowa, Kansas and Texas. Which of these states share a border?
4. Only one of the cattle trails that crossed Oklahoma linked Texas, Oklahoma, Kansas and Nebraska. Which one?
5. The Missouri Tigers, Nebraska Cornhuskers, Oklahoma Cowboys, Texas Aggies and Texas Longhorns are all traveling this week. Which team has the shortest distance to travel?



OVERTIME ACTIVITY

Find three articles in today's *Oklahoman* that mention cities in Colorado, Iowa, Kansas or Texas. Look up the latitude and longitude for these cities and locate them on a map.

WEEK 13 GAME

Written by Ann Kennedy

GAME SCHEDULE

Texas at Texas A&M

Nebraska at Colorado

1. One of the most beautiful natural features in Kansas is Castle Rock, a large limestone pillar in the western part of the state. This formation was created over the past 80 million years. Using an encyclopedia or the Internet, can you explain what caused the unique castle-like appearance of the pillar?

2. The state of Kansas is famous for the fictional "cyclone" that swept Dorothy away from her Kansas home in *The Wizard of Oz*. Iowa State calls their football team the "Cyclones". The cyclones in these examples are also called tornadoes. Where in the United States are tornadoes most frequent? During what time of year?

3. A distinctive geological feature of the area near the University of Oklahoma is a unique reddish, rose shaped formation. What is the official state rock of Oklahoma called? Name two other places in the world where geologists have found the same type of rock.

4. The Texas Tech Red Raiders will play the Sooners this week. Use a map to determine approximately how many miles long the trip is from Lubbock, Texas, to Norman, Oklahoma, if you travel by car.

5. Oklahoma has more manmade lakes than any other state. How many are there? There are over one million surface acres of water and more miles of shoreline than the Atlantic and Gulf coasts combined! What is the largest lake in Oklahoma?



OVERTIME ACTIVITY

Oklahoma turned 101 years old on Nov. 16. Use the Internet and atlas sources to compile a list of 10 facts about Oklahoma.

WEEK 14 GAME

Written by Lyndal Caddell

GAME SCHEDULE

Oklahoma at Oklahoma State

Kansas at Missouri

Texas Tech at Baylor

Oklahoma at Oklahoma State

1. Both OU and OSU have had their highs and lows in this Bedlam rivalry. What are the highest and lowest elevation points in Oklahoma?
2. Stillwater and Norman are located in counties named after two individuals prominent in the late nineteenth century. Name these individuals.
3. Kansas and Missouri are bitter rivals. In 1863, William Quantrill led his band of "Bushwhackers" from Missouri to massacre the residents of what town in Kansas?
4. The nation's second most-played rivalry game will not be played in either Lawrence, Kansas, or Columbia, Missouri. Instead, both teams will travel I-70 to meet at what larger city on the Kansas-Missouri border?
5. The four Texas universities playing this week are all in cities located on rivers. Name the river that runs through each city.



OVERTIME ACTIVITY

Locate and label the cities with Big XII universities. Which two cities are state capitals? Give the latitude and longitude for the cities bordering the region to the north, east, south and west.



Oklahoma Alliance for Geographic Education

Teacher Training | Curriculum Development | Outreach Programs | and More!

*More Than Half of Young Americans Can't Find New York on a Map.
We Are Dedicated to Helping Teachers Change That!*



Our Mission

According to the National Geographic Society, most young adults between the ages of 18 and 24 demonstrate a limited understanding of the world and place an insufficient importance on the basic geographic skills that can enhance their knowledge.

OKAGE is helping to spread geography through the preK-16 curriculum by providing high-quality professional development opportunities and classroom-ready materials for teachers.



Our Programs

Through a year-round series of workshops, training institutes, field studies and conferences, OKAGE is the primary source of information and professional development for geography educators in Oklahoma.



Help Our Students Become Globally Aware

Membership in OKAGE and most of our programs are free. Visit www.okageweb.org today and click "Become an OKAGE Member" to get started.

Proudly Serving Oklahoma Teachers for More than 20 Years!

100 East Boyd, SEC 442 | Norman, OK | 73069-1018 | Tel: 405.325.5832 | Toll Free 800.522.0772 x 5832 | okage@ou.edu | www.okageweb.org

TOPOGRAPHIC

ONE MAN'S VISION - 50 YEARS OF SURVEYING EXCELLENCE

With the objective of providing specialized surveying and mapping services to the oil industry, John F. Keating founded Topographic in Duncan, Oklahoma. The year was 1958, a time when Mr. Keating operated on a shoestring, often using temporary crewmen. He purchased aerial photography of the areas in which he was working to help him in the field as well as provide a background for his survey plats. Soon, oil companies began to expect the aerial photos with their well location plats. That was just the beginning of innovative services and products that have helped Topographic become Oklahoma's leading surveying company for the oil and gas industry.

The years since 1958 have been interesting and challenging for Topographic. Our proud traditions of meeting customer needs, creatively applying new technology and providing quality products and services at a fair price have been firmly established. Due to the efforts, skills and dedication of our employees, Topographic has become an institution rich in knowledge, experience, information and resources. With these strengths, new chapters of Topographic successes will continue to be written.



Topographic, Inc.
6709 N. Classen Blvd
Oklahoma City, OK
www.topographic.com